

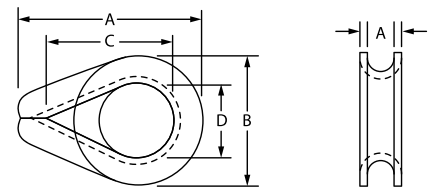
WIRE ROPE THIMBLES



WIRE ROPE THIMBLES

TRADE SIZE	APPROX. WEIGHT EACH IN POUNDS	HEAVY DUTY WIRE ROPE THIMBLE / GALVANIZED				
		A	B	C	D	E
1/4"	0.075	2.19	1.50	1.63	0.88	0.41
5/16"	0.14	2.50	1.81	1.88	1.06	0.50
3/8"	0.25	2.88	2.13	2.13	1.13	0.66
7/16"	0.36	3.25	2.25	2.38	1.25	0.75
1/2-9/16"	0.51	3.63	2.56	2.75	1.50	0.84
5/8"	0.75	4.25	3.00	3.25	1.75	1.00
3/4"	1.47	5.00	3.50	3.75	2.00	1.25
7/8"	1.85	5.50	4.00	4.25	2.25	1.38
1"	3.00	6.13	4.38	4.50	2.50	1.56
1-1/8-1-1/4"	3.80	7.00	5.63	5.13	2.88	1.88
1-1/4-1-3/8"	8.60	9.06	6.75	6.50	3.50	2.25
1-3/8-1-1/2"	11.00	9.06	7.00	6.50	3.50	2.63
1-5/8"	11.80	11.25	8.13	8.00	4.00	2.72
1-3/4"	17.90	12.19	8.25	9.00	4.50	2.88
1-7/8-2"	25.00	15.13	10.25	12.00	6.00	3.13
2-1/4"	45.00	17.13	11.88	14.00	7.00	3.63
2-1/2"	63.50	22.25	12.75	17.50	8.00	4.38

HEAVY DUTY WIRE ROPE THIMBLE



TRADE SIZE	APPROX. WEIGHT EACH IN POUNDS	STANDARD DUTY WIRE ROPE THIMBLE/ZINC PLATED				
		A	B	C	D	E
1/8"	0.02	1.88	1.06	1.25	0.69	0.16
3/16"	0.023	1.88	1.06	1.25	0.69	0.22
1/4"	0.05	1.94	1.06	1.31	0.69	0.28
5/16"	0.054	2.13	1.25	1.50	0.81	0.38
3/8"	0.062	2.38	1.47	1.63	0.94	0.44
1/2"	0.13	2.75	1.75	1.88	1.13	0.56
5/8"	0.22	3.50	2.38	2.25	1.38	0.69
3/4"	0.50	3.75	2.69	2.50	1.63	0.81
7/8"	0.85	5.00	3.19	3.50	1.88	0.94
1"	1.00	5.69	3.75	4.25	2.50	1.06

STANDARD DUTY WIRE ROPE THIMBLE

