

# WELDABLE GRAB HOOKS & D-RINGS

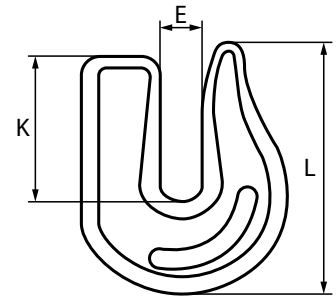


# WELDABLE GRAB HOOKS & D-RINGS

| SIZE ROPE DIAMETER | WELDABLE GRAB HOOK |                       |                            |                  |
|--------------------|--------------------|-----------------------|----------------------------|------------------|
|                    | Rockwell Hardness  | Yield Point in Pounds | Ultimate Failure in Pounds | Weight in Pounds |
| 5/16"              | 95.0               | 9,500-10,000          | 12,000                     | 0.375            |
| 3/8"               | -                  | -                     | -                          | -                |
| 1/2"               | upon request       | upon request          | 32,800                     | 1.39             |
| 5/8"               | -                  | -                     | -                          | -                |

Read important warnings and information on the inside back cover of this catalog titled Cautions.

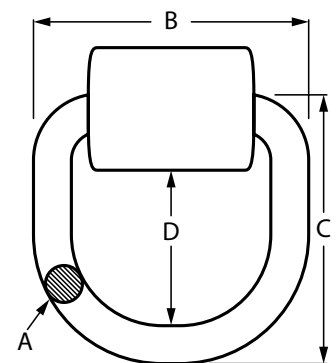
## WELDABLE GRAB HOOK



Carbon Steel Self Colored

| SIZE (A) | WELD ON D-RINGS |      |      |            |                   |                    |
|----------|-----------------|------|------|------------|-------------------|--------------------|
|          | Dimensions      |      |      | WLL        | Breaking Strength | Weight Each (lbs.) |
|          | B               | C    | D    |            |                   |                    |
| 1/2"     | 3.37            | 3.50 | 2.50 | 4,100 Lbs  | 20,500 Lbs        | 1.09               |
| 5/8"     | 4.25            | 4.25 | 3.00 | 8,800 Lbs  | 44,000 Lbs        | 1.78               |
| 3/4"     | 4.50            | 4.50 | 3.00 | 10,600 Lbs | 53,000 Lbs        | 2.26               |
| 1"       | 5.00            | 6.00 | 4.00 | 17,000 Lbs | 85,000 Lbs        | 4.83               |

## WELD ON D-RINGS



Carbon Steel Self Colored