

TURNBUCKLES



 **M&G**
Industries

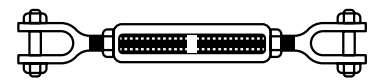


TURNBUCKLES

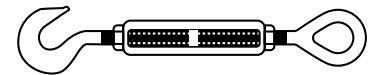
SIZE (DIA. X TAKE-UP)	TURNBUCKLES / HOT GALVANIZED, DROP FORGED					
	APPROXIMATE WEIGHT EACH IN POUNDS		WORKING LOAD LIMIT IN LBS.			Avg. Overall Length, with Ends in Closed Pos.
	Approximate Weight Each in Pounds	Eyes and / or Hooks	Jaw & Eye	Hook & Hook, Hook & Eye	Eye & Eye, Jaw & Jaw	
1/4 x 4"	0.3	0.3	0.4	400	500	8.25
5/16 x 4-1/2"	0.5	0.53	0.58	700	800	9.56
3/8 x 6"	0.75	0.82	0.93	1,000	1,200	11.88
1/2 x 6"	1.50	1.62	1.68	1,500	2,200	13.31
1/2 x 9"	1.75	1.82	1.85	1,500	2,200	16.31
1/2 x 12"	2.18	2.19	2.20	1,500	2,200	19.31
5/8 x 6"	2.63	2.69	2.82	2,250	3,500	15.50
5/8x 9"	3.00	3.01	3.25	2,250	3,500	18.50
5/8 x 12"	3.25	3.50	3.75	2,250	3,500	21.50
3/4 x 6"	3.75	4.25	4.68	3,000	5,200	17.00
3/4 x 9"	4.50	5.00	5.38	3,000	5,200	20.00
3/4 x 12"	5.75	5.75	6.12	3,000	5,200	23.00
3/4 x 18"	7.00	7.25	7.75	3,000	5,200	29.00
7/8 x 12"	8.38	8.88	9.38	4,000	7,200	24.63
7/8 x 18"	10.25	10.60	11.44	4,000	7,200	30.63
1 x 6"	10.75	11.10	11.80	5,000	10,000	20.63
1 x 12"	11.25	12.0	12.88	5,000	10,000	26.63
1 x 18"	14.0	14.75	16.1	5,000	10,000	32.63
1 x 24"	17.0	17.75	18.6	5,000	10,000	38.63
1-1/4 x 12"	19.0	21.2	23.6	5,000	15,200	29.88
1-1/4 x 18"	24.1	26.0	26.6	5,000	15,200	35.88
1-1/4 x 24"	25.0	28.7	31.2	5,000	15,200	41.88
1-1/2 x 12"	27.0	31.1	35.5	7,500	21,400	32.88
1-1/2 x 18"	31.2	36.4	40.7	7,500	21,400	38.88
1.1/2 x 24"	38.2	44.2	47.63	7,500	21,400	44.38
1-3/4 x 18"	53.0	57.5	62.0	-	28,000	41.38
1-3/4 x 24"	58.0	60.0	64.0	-	28,000	47.75
2 x 24"	90.0	102.0	115.0	-	37,000	51.75
2-1/2 x 24"	163.0	180.0	200.0	-	60,000	58.50
2-3/4 x 24"	180.0	214.0	248.0	-	75,000	61.50

TURNBUCKLES

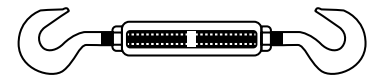
Hot Galvanized, Drop Forged



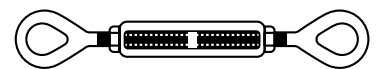
Jaw & Jaw



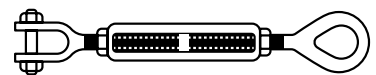
Hook & Eye



Hook & Hook



Eye & Eye



Jaw & Eye

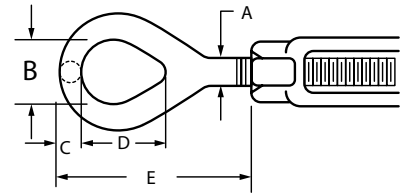
All turnbuckles available with lock nuts upon request.



TURNBUCKLES

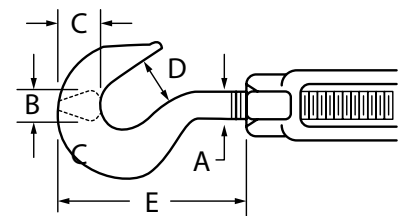
TURNBUCKLES / HOOK DIMENSIONS				
A	B	C	D	E
1/4"	0.34	0.22	0.78	1.78
5/16"	0.44	0.28	0.94	2.19
3/8"	0.53	0.34	1.13	2.56
1/2"	0.72	0.44	1.44	3.22
5/8"	0.88	0.50	1.75	3.88
3/4"	1.00	0.63	2.13	4.69
7/8"	1.25	0.75	2.38	5.25
1"	1.44	0.88	3.00	6.38
1-1/4"	1.81	1.13	3.56	7.75
1-1/2"	2.13	1.25	4.13	8.63
1-3/4"	2.38	1.50	4.69	10.00
2"	2.69	1.75	5.75	12.13
2-1/2"	3.13	2.00	6.50	13.56
2-3/4"	3.25	2.25	7.00	15.00

TURNBUCKLES/HOOK



TURNBUCKLES / EYE DIMENSIONS				
A	B	C	D	E
1/4"	0.25	0.41	0.45	1.66
5/16"	0.31	0.44	0.50	1.91
3/8"	0.38	0.53	0.56	2.28
1/2"	0.50	0.69	0.66	2.84
5/8"	0.63	0.84	0.84	3.53
3/4"	0.75	1.00	0.97	4.31
7/8"	0.88	1.19	1.13	5.00
1"	1.00	1.38	1.25	5.69
1-1/4"	1.06	1.50	1.50	6.91
1-1/2"	1.31	1.75	1.88	8.68

TURNBUCKLES/EYE

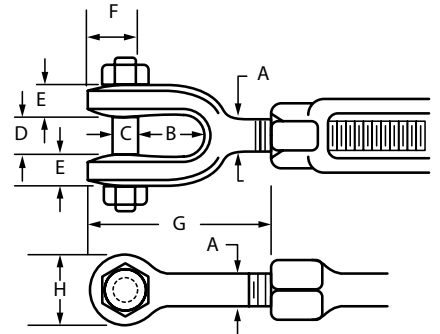




TURNBUCKLES

TURNBUCKLES / JAW DIMENSIONS							
A	B	C	D	E	F	G	H
1/4"	0.63	0.25	0.41	0.28	0.50	1.63	0.63
5/16"	0.88	0.25	0.47	0.28	0.50	2.00	0.69
3/8"	0.88	0.31	0.50	0.31	0.59	2.19	0.81
1/2"	1.06	0.38	0.63	0.41	0.75	2.75	1.00
5/8"	1.31	0.50	0.75	0.50	1.03	3.50	1.31
3/4"	1.50	0.63	0.94	0.56	1.28	4.13	1.63
7/8"	1.75	0.75	1.13	0.69	1.47	4.84	1.88
1"	2.06	0.88	1.19	0.78	1.66	5.53	2.13
1-1/4"	2.81	1.13	1.75	1.00	2.09	7.19	2.63
1-1/2"	2.81	1.38	2.06	1.06	2.47	7.88	3.13
1-3/4"	3.38	1.63	2.38	1.25	2.91	9.38	3.50
2"	3.75	2.00	2.50	1.56	3.53	10.88	4.19
2-1/2"	4.19	2.25	2.88	1.56	4.63	13.34	5.63
2-3/4"	4.44	2.75	3.50	1.63	5.38	15.00	-

TURNBUCKLES/JAW



SIZE	LASHING TURNBUCKLE WELDED FORKS						
	BREAKING LOAD IN POUNDS	WEIGHT IN POUNDS	A	D	L1	L2	L3
3/16"	1,800	0.12	.25	.19	7.50	5.00	3.13
1/4"	2,400	0.22	.28	.25	8.50	5.50	3.50
5/16"	4,500	0.35	.31	.31	9.50	6.50	4.00
3/8"	6,500	0.55	.38	.38	10.75	7.25	4.50
1/2"	11,000	1.10	.50	.50	14.25	9.50	6.00
9/16"	16,000	1.80	.56	.56	15.25	10.25	7.00
5/8"	20,000	2.70	.63	.63	18.00	12.00	8.00

LASHING TURNBUCKLES WELDED FORKS & EYES

Self Color

