

STAINLESS STEEL FITTINGS





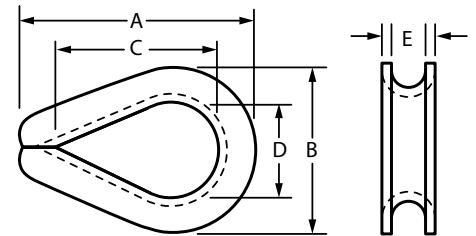
STAINLESS STEEL FITTINGS



SIZE	APPROX. WEIGHT EACH IN POUNDS	HEAVY DUTY WIRE ROPE THIMBLE / STAINLESS STEEL TYPE 304				
		A	B	C	D	E
1/4"	0.08	2.19	1.50	1.63	.88	.41
5/16"	0.10	2.50	1.88	1.88	1.13	.50
3/8"	0.25	2.88	2.09	2.09	1.13	.66
1/2"	0.45	3.63	2.63	2.75	1.50	.88
5/8"	0.68	4.25	3.09	3.25	1.75	1.00
3/4"	1.20	5.00	3.50	3.75	2.00	1.25
7/8"	1.85	5.66	4.19	4.31	2.25	1.50
1"	2.20	6.13	4.63	5.00	2.50	1.56
1-1/8 - 1-1/4"	3.80	7.13	5.33	5.38	2.88	1.88
1-1/4 - 1-3/8"	8.60	8.38	6.67	6.50	3.50	2.25

HEAVY DUTY WIRE ROPE THIMBLE

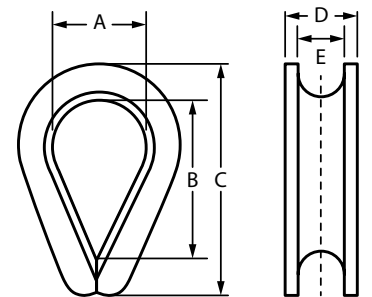
Stainless Steel Type 304 & Type 316



SIZE	APPROX. WEIGHT EACH IN POUNDS	STANDARD DUTY WIRE ROPE THIMBLE / STAINLESS STEEL TYPE 304				
		A	B	C	D	E
3/32"	0.4	7.0	12	21	5.0	3
1/8"	0.5	9.0	14	23	6.0	4
5/32"	0.6	11.0	16	27	7.0	5
3/16"	0.8	14.5	21	21	8.0	6
1/4"	1.0	16.0	26	39	9.5	7
7/32"	1.2	18.5	29	42	10.0	8
5/16"	2.2	21.0	35	50	12.0	9
9/32"	3.0	26.0	42	59	14.0	11
1/2"	4.8	31.0	48	70	17.5	14
9/16"	6.2	34.0	55	76	20.0	16
5/8"	8.2	39.0	63	85	21.0	17
1/16"	12.0	41.0	68	93	23.0	19
3/8"	15.5	45.0	73	103	26.0	22
7/8"	17.2	50.0	82	112	32.0	24
1"	21.2	54.0	92	125	34.0	26

STANDARD DUTY WIRE ROPE THIMBLES

Stainless Steel Type 304 Forged



Read important warnings and information on the inside cover of this catalog titled Cautions.

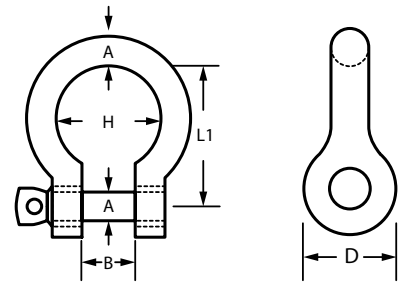


STAINLESS STEEL FITTINGS

SIZE (A) (INCHES)	ANCHOR SHACKLE / STAINLESS STEEL 316, SCREW PIN						
	BREAKING LOAD	WEIGHT		B (MM)	B (MM)	B (MM)	B (MM)
		Body (kgs)	Pin (kgs)				
5/32"	750	0.009	0.003	8	14	8	16
3/16"	1,300	0.014	0.004	10	17	10	20
1/4"	1,800	0.022	0.006	12	21	12	24
5/16"	3,500	0.048	0.016	16	28	16	32
13/32"	5,400	0.120	0.030	20	34	20	40
15/32"	7,200	0.168	0.055	24	42	24	48
1/2"	11,200	0.228	0.070	26	45	26	52
9/16"	12,000	0.305	0.105	28	50	28	56
5/8"	13,500	0.420	0.130	32	56	32	64
3/4"	18,200	0.756	0.210	38	66	38	76
7/8"	21,000	1.125	0.330	44	77	44	88
1"	24,000	1.620	0.490	50	87	50	-

EUROPEAN & U.S. STAINLESS STEEL ANCHOR SHACKLES

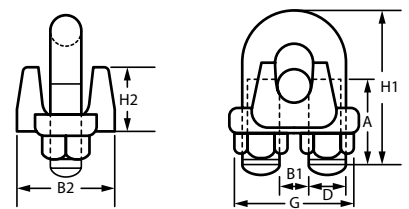
Stainless Steel Type 316
Forged



SIZE	APPROX. WEIGHT EACH IN POUNDS	WIRE ROPE CLIPS / STAINLESS STEEL TYPE 316						
		A (MM)	B1 (MM)	B2 (MM)	B2 (MM)	D (MM)	H2 (MM)	1 (MM)
2"	.01	10	4	14	M3	18	11	14
3"	.017	12	5	16	M4	24	12	17
4"	.02	13	6	18	M4	24	14	19
5"	.035	15	7	20	M6	33	16	24
6"	.04	15	8	22	M6	33	18	28
8"	.08	20	10	28	M8	40	21	34
10"	.14	28	12	35	M10	50	24	45
12"	.22	35	14	39	M12	60	28	51
14"	.27	40	16	45	M12	65	33	53
16"	.38	45	18	48	M14	75	38	60
19"	.44	50	20	53	M14	80	40	62

WIRE ROPE CLIPS

Stainless Steel Type 316



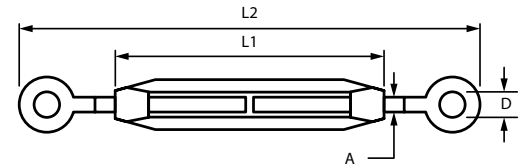
Read important warnings and information on the inside back cover of this catalog titled Cautions.



STAINLESS STEEL TURNBUCKLES

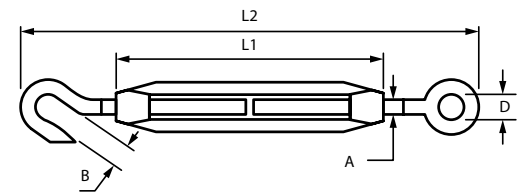
SIZE	TURNBUCKLE WELDED FORKS / STAINLESS STEEL 316 FORGED					
	BREAKING LOAD IN POUNDS	WEIGHT IN POUNDS	A	D	L1	L2
3/16"	1,650	0.10	.19	.31	2.75	4.75
1/4"	2,200	0.20	.25	.38	3.38	6.38
5/16"	4,200	0.30	.31	.56	4.75	8.00
3/8"	6,300	0.50	.38	.63	6.00	9.50
1/2"	10,000	1.00	.50	.61	8.00	12.00
5/8"	15,000	1.80	.63	.75	10.00	15.50

STAINLESS STEEL TURNBUCKLES EYE & EYE



SIZE	TURNBUCKLE WELDED FORKS / STAINLESS STEEL 316 FORGED						
	BREAKING LOAD IN POUNDS	WEIGHT IN POUNDS	A	D	L1	L2	L3
3/16"	1,650	0.10	.19	.36	0.31	2.75	4.75
1/4"	2,200	0.20	.25	.38	0.38	3.38	6.38
5/16"	4,200	0.30	.31	.44	0.56	4.75	8.00
3/8"	6,300	0.50	.38	.50	0.63	6.00	9.50
1/2"	10,000	1.00	.50	.56	6.10	8.00	12.00
5/8"	15,000	1.80	.63	.63	0.75	10.00	15.50

STAINLESS STEEL TURNBUCKLES HOOK & EYE

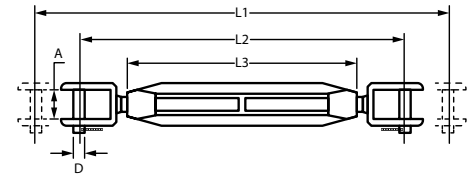


Read important warnings and information on the inside back cover of this catalog titled Cautions.

STAINLESS STEEL TURNBUCKLES

SIZE	TURNBUCKLE WELDED FORKS / STAINLESS STEEL 316 FORGED						
	BREAKING LOAD IN POUNDS	WEIGHT IN POUNDS	A	D	L1	L2	L3
3/16"	1,800	0.12	.25	.19	7.50	5.00	3.13
1/4"	2,400	0.22	.28	.25	8.50	5.50	3.50
5/16"	4,500	0.35	.31	.31	9.50	6.50	4.00
3/8"	6,500	0.55	.38	.38	10.75	7.25	4.50
1/2"	11,000	1.10	.50	.50	14.25	9.50	6.00
9/16"	16,000	1.80	.56	.56	15.25	10.25	7.00
5/8"	20,000	2.70	.63	.63	18.00	12.00	8.00

STAINLESS STEEL TURNBUCKLES JAW & JAW



SIZE	TURNBUCKLE WELDED FORKS / STAINLESS STEEL 316 FORGED					
	BREAKING LOAD IN POUNDS	WEIGHT IN POUNDS	A	D	L1	L2
3/16"	1,650	0.10	.19	.36	2.75	4.75
1/4"	2,200	0.20	.25	.38	3.38	6.38
5/16"	4,200	0.30	.31	.44	4.75	8.00
3/8"	6,300	0.50	.38	.50	6.00	9.50
1/2"	10,000	1.00	.50	.56	8.00	12.00
5/8"	15,000	1.80	.63	.75	10.00	-

STAINLESS STEEL TURNBUCKLES HOOK & HOOK

