

SHACKLES



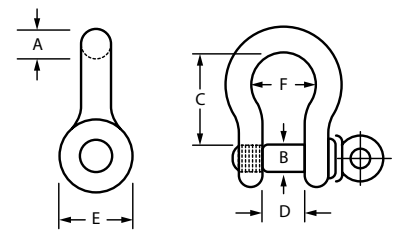
SHACKLES



SIZE (A)	WORKING LOAD LIMIT IN TONS	PIN DIAMETER IN INCHES (B)	APPROX. WEIGHT EACH IN POUNDS	ANCHOR SHACKLE SCREW PIN/ GALVANIZED			
				C	D	E	F
3/16"	1/3	1/4	0.05	0.88	0.38	0.56	0.63
1/4"	1/2	5/16	0.13	1.06	0.47	0.66	0.75
5/16"	3/4	3/8	0.21	1.25	0.53	0.81	0.84
3/8"	1	7/16	0.33	1.44	0.63	0.97	1.00
7/16"	1-1/2	1/2	0.47	1.69	0.75	1.06	1.13
1/2"	2	5/8	0.76	1.88	0.81	1.31	1.25
5/8"	3-1/4	3/4	1.44	2.44	1.06	1.56	1.69
3/4"	4-3/4	7/8	2.3	2.88	1.19	1.88	1.94
7/8"	6-1/2	1	3.5	3.38	1.44	2.13	2.19
1"	8-1/2	1-1/8	5.0	3.81	1.69	2.38	2.63
1-1/8"	9-1/2	1-1/4	7.0	4.25	1.75	2.63	2.88
1-1/4"	12	1-3/8	9.5	4.69	2.00	3.00	3.13
1-3/8"	13-1/2	1-1/2	13.0	5.31	2.13	3.25	3.50
1-1/2"	17	1-5/8	16.5	5.69	2.31	3.50	3.75
1-3/4"	25	2	29.0	7.06	2.88	4.25	4.88
2"	35	2-1/4	43.0	7.75	3.31	4.88	5.44
2-1/4"	45	2-1/2	59.4	9.25	3.63	5.25	5.50
2-1/2"	55	2-3/4	86.0	10.75	4.13	5.88	7.25
3"	85	3-1/4	119.5	13.75	4.88	6.75	7.63

ANCHOR SHACKLES SCREW PIN

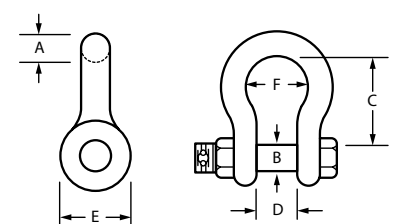
Galvanized, Alloy Steel Pin, Available in Commercial Grade



SIZE (A)	WORKING LOAD LIMIT IN TONS	PIN DIAMETER IN INCHES (B)	APPROX. WEIGHT EACH IN POUNDS	ANCHOR SHACKLE SAFETY BOLT GALVANIZED			
				C	D	E	F
1/4"	1/2	5/16	0.13	1.06	0.47	0.66	0.75
5/16"	3/4	3/8	0.21	1.25	0.53	0.81	0.84
3/8"	1	7/16	0.33	1.44	0.63	0.97	1.00
7/16"	1-1/2	1/2	0.47	1.69	0.75	1.06	1.13
1/2"	2	5/8	0.76	1.88	0.81	1.31	1.25
5/8"	3-1/4	3/4	1.44	2.44	1.06	1.56	1.69

ANCHOR SHACKLES SAFETY BOLT TYPE

Galvanized Alloy Steel Bolt & Nut



Read important warnings and information on the inside back cover of this catalog titled Cautions.

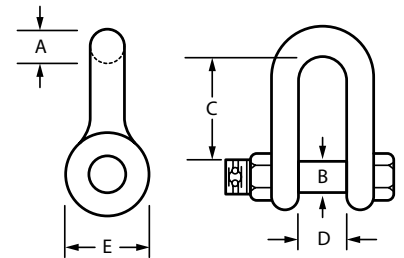
SHACKLES



SIZE (A)	WORK LOAD LIMIT IN TONS	BOLT DIAMETER IN INCHES (B)	APPROX. WEIGHT EACH IN POUNDS	CHAIN SHACKLES BOLT TYPE / GALVANIZED		
				C	D	E
1/2"	2	5/8	0.91	1.69	.81	1.25
5/8"	3-1/4	3/4	1.72	2.09	1.09	1.53
3/4"	4-3/4	7/8	2.7	2.44	1.28	1.81
7/8"	6-1/2	1	3.94	2.94	1.47	2.13
1"	8-1/2	1-1/8	5.75	3.25	1.69	2.38
1-1/8"	9-1/2	1-1/4	8.0	3.56	1.84	2.69
1-1/4"	12	1-3/8	10.5	3.94	2.00	2.94
1-3/8"	13-1/2	1-1/2	13.1	4.50	2.25	3.34
1-1/2"	17	1-5/8	18.3	5.00	2.31	3.63
1-3/4"	25	2	29.3	6.00	2.88	4.13
2"	35	2-1/4	44.3	7.00	3.25	4.75
2-1/2"	55	2-3/4	94.0	8.50	4.25	5.75
3"	85	3-1/4	160.0	9.44	4.88	6.38
3-1/2"	120	3-3/4	250.0	5.50	5.50	7.75

CHAIN SHACKLES BOLT TYPE

Galvanized



SIZE (A)	WORK LOAD LIMIT IN TONS	BOLT DIAMETER IN INCHES (B)	APPROX. WEIGHT EACH IN POUNDS	CHAIN SHACKLES SQUARE HEAD		
				C	D	E
1/2"	2	5/8	0.91	1.69	0.81	1.25
5/8"	3-1/4	3/4	1.72	2.09	1.09	1.53
3/4"	4-3/4	7/8	2.7	2.44	1.28	1.81
7/8"	6-1/2	1	3.94	2.94	1.47	2.13
1"	8-1/2	1-1/8	5.75	3.25	1.69	2.38
1-1/8"	9-1/2	1-1/4	8.0	3.56	1.84	2.69
1-1/4"	12	1-3/8	10.5	3.94	2.00	2.94
1-3/8"	13-1/2	1-1/2	13.1	4.50	2.25	3.34
1-1/2"	17	1-5/8	18.3	5.00	2.31	3.63
1-3/4"	25	2	29.3	6.00	2.88	4.13

TRAWL CHAIN SHACKLES SQUARE HEAD

Self Color

