

HOOKS

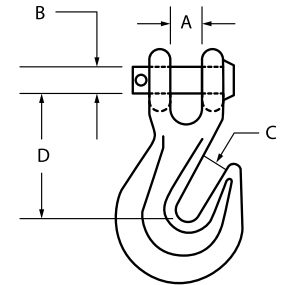


HOOKS



SIZE	WORKING LOAD LIMIT IN POUNDS	APPROXIMATE WEIGHT EACH IN POUNDS	HIGH TEST CLEVIS GRAB HOOKS / GRADE 43			
			A	B	C	D
1/4"	2,600	0.43	.38	.38	.34	1.94
5/16"	3,900	0.72	.44	.44	.41	2.38
3/8"	5,400	1.15	.56	.47	.50	2.63
1/2"	9,200	2.35	.69	.63	.66	3.50
5/8"	12,750	4.10	.81	.63	.81	4.19

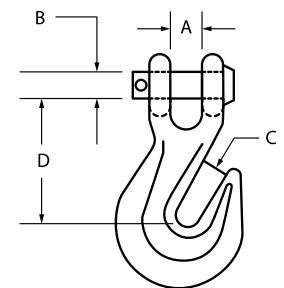
HIGH TEST CLEVIS GRAB



Grade 43 / Self Colored, Zinc Plated, Hot Galvanized

SIZE	WORKING LOAD LIMIT IN POUNDS	APPROXIMATE WEIGHT EACH IN POUNDS	ALLOY CLEVIS GRAB HOOKS / GRADE 70			
			A	B	C	D
1/4"	3,600	0.43	.38	.38	.34	1.94
5/16"	5,400	0.72	.44	.44	.41	2.38
3/8"	7,500	1.15	.56	.47	.50	2.63
1/2"	12,750	2.35	.69	.63	.66	3.50

ALLOY G70 CLEVIS GRAB



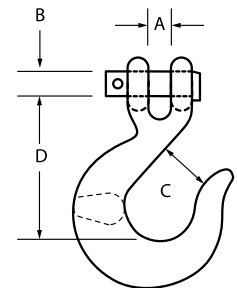
Grade 70 / Self Colored, Zinc Plated, Hot Galvanized, Yellow Chromated

HOOKS



SIZE	WORKING LOAD LIMIT IN POUNDS	APPROXIMATE WEIGHT EACH IN POUNDS	HIGH TEST CLEVIS SLIP HOOKS / GRADE 43			
			A	B	C	D
1/4"	1,950	0.58	.38	.38	.88	2.56
5/16"	2,875	0.86	.44	.44	1.00	2.81
3/8"	4,000	1.40	.56	.47	1.28	3.25
1/2"	6,500	2.20	.63	.56	1.38	4.00

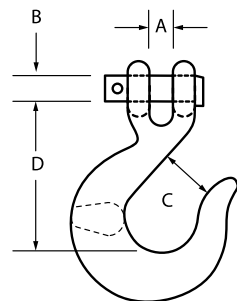
HIGH TEST CLEVIS SLIP



Grade 43 / Forged Steel,
Heated Treated, Painted
with or without latch

SIZE	WORKING LOAD LIMIT IN POUNDS	APPROXIMATE WEIGHT EACH IN POUNDS	ALLOY CLEVIS SLIP HOOKS / GRADE 70			
			A	B	C	D
1/4"	2,750	0.50	.38	.38	.34	1.94
5/16"	4,300	0.75	.44	.44	.41	2.38
3/8"	5,250	1.20	.56	.47	.50	2.63
1/2"	9,000	2.80	.69	.63	.66	3.50

ALLOY G70 CLEVIS SLIP



Grade 70/Self Colored, Zinc
Plated, Hot Galvanized,
Yellow Chromated
with or without latch

Clevis Hook Fitting Minimum Breaking Strength = 4 x W.L.L.
Read important warnings and information on the inside back cover of this
catalog titled Cautions.

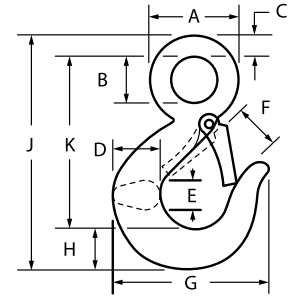
HOOKS



SIZE (WLL) IN TONS		EYE HOIST HOOKS/CARBON OR ALLOY STEEL									WT. WITH LATCH IN LBS.	
Carbon	Alloy	A	B	C	D	E	F	G	H	J	K	
3/4 ton	1 ton	1.50	0.75	0.38	0.88	0.63	0.94	2.88	0.75	4.38	3.25	0.60
1	1-1/2	1.75	0.88	0.44	1.00	0.69	1.06	3.13	0.81	4.88	3.63	0.82
1-1/2	2	2.00	1.13	0.44	1.19	0.81	1.06	3.50	1.00	5.50	4.13	1.44
2	3	2.38	1.25	0.59	1.38	0.94	1.22	3.94	1.19	6.31	4.56	1.94
3	4-1/2	3.00	1.56	0.69	1.63	1.19	1.50	5.00	1.50	7.94	5.75	3.94
5	7	3.81	2.00	0.88	2.06	1.50	1.88	6.25	1.75	10.00	7.38	7.75
7-1/2	11	4.69	2.44	1.13	2.63	1.63	2.25	7.56	2.25	12.44	9.06	13.00

Eye Hoist Hook Minimum Breaking Strength = 5 x WLL.

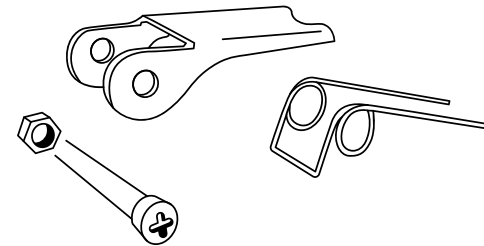
EYE HOIST HOOKS



Carbon or Alloy Steel
with or without latch

HOOK SIZE IN TONS		STAINLESS LATCH KIT
Carbon	Alloy	Approximate Weight Each in Pounds
3/4 ton	1 ton	.02
1	1-1/2	.02
1-1/2	2	.03
2	3	.03
3	4-1/2	.05
5	7	.09
7-1/2	11	.17

LATCH KIT



Stainless Steel

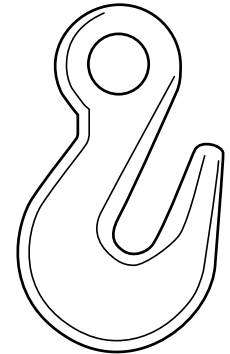
HOOKS



SIZE	WORKING LOAD LIMIT IN POUNDS	APPROXIMATE WEIGHT EACH IN POUNDS	HIGH TEST EYE GRAB HOOKS / GRADE 43			
			A	B	C	D
1/4"	2,600	0.30	.50	.31	1.88	-
5/16"	3,900	0.57	.56	.44	2.25	-
3/8"	5,400	0.95	.69	.50	2.56	-
1/2"	9,200	2.14	.88	.59	3.50	-

Eye Slip Hook and Grab Hook Minimum Breaking Strength = 4 x W.L.L.
Read important warnings and information on the inside back cover of this catalog titled Cautions.

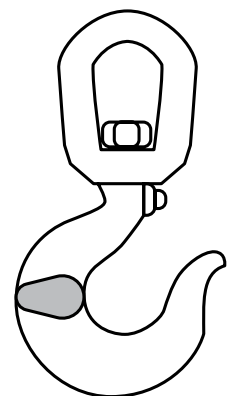
HIGH TEST EYE GRAB



Grade 43/Forged Steel,
Heated Treated, Painted Red

ALLOY SWIVEL HOOKS		
SIZE/WLL IN TONS	APPROXIMATE WEIGHT EACH IN POUNDS	WORKING LOAD LIMIT IN POUNDS
1.5	1.26	3,000
2	2.25	4,000
3	2.57	6,000
5	4.75	10,000
7	10.29	14,000
11	17.50	22,000
15	23.25	30,000

SWIVEL HOOKS



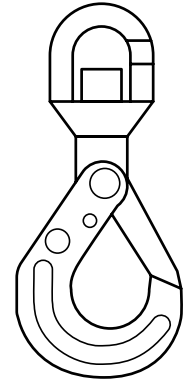
Alloy Swivel Hooks, Painted
& Yellow Chromated

HOOKS



ALLOY SWIVEL HOOKS / SELF LOCKING		
SIZE	APPROXIMATE WEIGHT EACH IN POUNDS	WORKING LOAD LIMIT IN POUNDS
1/4" (6 MM)	1.50	2,470
5/16"	2.64	4,400
3/8"	5.26	7,055
1/2"	11.22	10,600
5/8"	18.00	18,078

ALLOY SWIVEL HOOK SELF-LOCKING

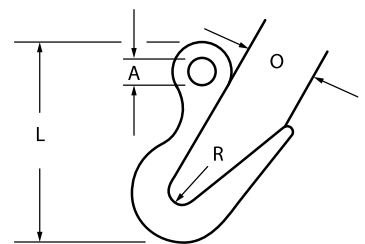


Grade 80

SORTING HOOK / FORGED ALLOY STEEL, HEATED TREATED	
Working Load Limit 2.1/2" from Tip	2 Ton
Working Load Limit, at Bottom	7-1/2 Ton
Approximate Weight Each	6.75 lb
Overall Length L	9.69"
I.D. of Eye A	1.38"

Sorting Hooks Minimum Breaking Strength = 5 x W.L.L.

SORTING HOOKS



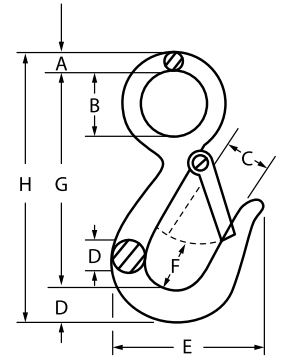
Forged Alloy Steel, Heat Treated

HOOKS



SIZE	WORKING LOAD LIMIT IN POUNDS	SNAP HOOK / FORGED STEEL, ELECTRO GALVANIZED									APPROXIMATE WEIGHT EACH IN POUNDS
		A	B	C	D	E	F	G	H		
7/16"	750	.31	.69	.56	.63	2.25	.81	3.09	4.00	.38	

SAFETY SNAP HOOKS

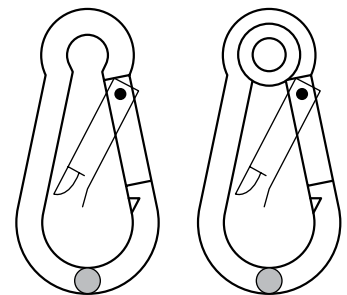


Forged Steel, Electro Galvanized with latch

CARABINER STYLE SNAP HOOKS / CARBON STEEL, ZINC PLATED		STAMPED
HOOK SIZE	APPROXIMATE WEIGHT EACH IN POUNDS	WLL
3/16"	0.032	220
1/4"	0.062	260
5/16"	0.138	500
3/8"	0.199	550
7/16"	0.40	990
1/2"	0.60	1200

*Available with and without Eyelets

CARABINER STYLE SNAP HOOKS



Carbon Steel, Zinc Plated with or without eyelet