

# HAMMER LOCKS

---



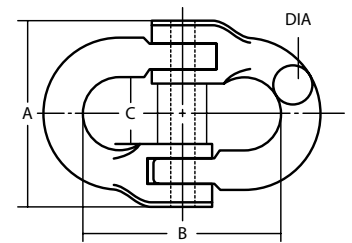


# HAMMER LOCKS

DIAMETER	WORK LOAD LIMIT IN TONS	APPROX. WEIGHT EACH IN POUNDS	HAMMER LOCKS		
			A	B	C
3/8"	3	0.44	2.28	2.36	0.83
1/2"	4	0.66	2.52	2.76	0.89
5/8"	5	1.17	3.03	3.35	1.12
3/4"	8	2.20	3.66	4.13	1.30
7/8"	13	3.37	4.29	4.88	1.57
1"	15	5.41	4.96	5.51	1.81

## HAMMER LOCKS

Grade 80



All of our material is backed by a 100% "flaw free" guarantee.