

EYE BOLTS & EYE NUTS

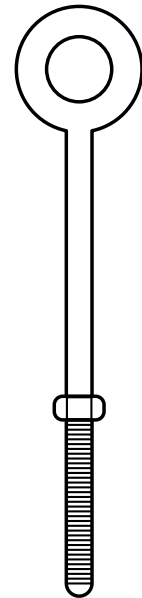


EYE BOLTS & EYE NUTS

REGULAR NUT EYE BOLT

Hot galvanized, forged steel

REGULAR NUT EYE BOLT				
SIZE INCH	WLL LBS	THREAD LENGTHS INCH	I.D. IF EYE INCH	N.W. LBS / 100 PCS
1/4 x 2	650	1.5	0.50	6.00
1/4 x 4	650	2.5	0.50	13.50
5/16 x 2-1/4	1,200	1.5	0.62	18.75
5/16 x 4-1/4	1,200	2.5	0.62	25.00
3/8 x 2-1/2	1,550	1.5	0.75	24.33
3/8 x 4-1/2	1,550	2.5	0.75	37.50
3/8 x 6	1,550	2.5	0.75	43.75
1/2 x 3-1/4	2,600	1.5	1.00	50.00
1/2 x 6	2,600	3.0	1.00	62.50
1/2 x 8	2,600	3.0	1.00	75.00
1/2 x 10	2,600	3.0	1.00	88.00
1/2 x 12	2,600	3.0	1.00	100.00
5/8 x 4	5,200	2.0	1.25	101.25
5/8 x 6	5,200	3.0	1.25	120.00
5/8 x 8	5,200	3.0	1.25	131.00
5/8 x 10	5,200	3.0	1.25	162.50
5/8 x 12	5,200	4.0	1.25	175.00
3/4 x 4-1/2	7,200	2.0	1.50	185.90
3/4 x 6	7,200	3.0	1.50	180.00
3/4 x 8	7,200	3.0	1.50	200.00
3/4 x 10	7,200	3.0	1.50	237.50
3/4 x 12	7,200	4.0	1.50	251.94
3/4 x 15	7,200	5.0	1.50	300.00
7/8 x 5	10,600	2.5	1.75	275.00
7/8 x 8	10,600	4.0	1.75	325.00
7/8 x 12	10,600	4.0	1.75	400.00
1 x 6	13,300	3.0	2.00	425.00
1 x 9	13,300	4.0	2.00	452.00
1 x 12	13,300	4.0	2.00	550.00
1 x 18	13,300	7.0	2.00	650.00
1-1/4 x 8	21,000	4.0	2.50	750.00
1-1/4 x 12	21,000	4.0	2.50	900.00
1-1/4 x 20	21,000	6.0	2.50	1,150.00



EYE BOLTS & EYE NUTS

SHOULDER NUT EYE BOLT				
SIZE INCH	W.L.L. LBS	THREAD LENGTHS INCH	I.D. IF EYE INCH	N.W. LBS / 100 PCS
1/4 x 2	650	1.5	0.50	6.61
1/4 x 4	650	2.5	0.50	8.61
5/16 x 2-1/4	1,200	1.5	0.62	12.50
5/16 x 4-1/4	1,200	2.5	0.62	18.75
3/8 x 2-1/2	1,550	1.5	0.75	19.00
3/8 x 4-1/2	1,550	2.5	0.75	31.58
1/2 x 3-1/4	2,600	1.5	1.00	37.50
1/2 x 6	2,600	3.0	1.00	56.25
5/8 x 4	5,200	2.0	1.25	75.00
5/8 x 6	5,200	3.0	1.25	100.25
3/4 x 4-1/2	7,200	2.0	1.50	125.00
3/4 x 6	7,200	3.0	1.50	150.00
7/8 x 5	10,000	2.5	1.75	225.00
1 x 6	13,300	3.0	2.00	375.00
1 x 9	13,300	4.0	2.00	429.00
1-1/4 x 8	21,000	4.0	2.50	650.00
1-1/4 x 12	21,000	4.0	2.50	775.00
1-1/4 x 15	24,000	6.0	3.00	1,425.00

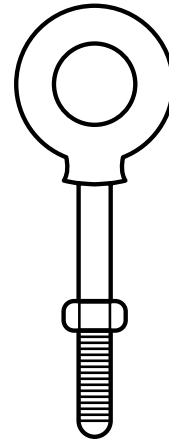
M.B.S. is 5 times of W.L.L.

SHOULDER MACHINERY EYE BOLT				
SIZE INCH	W.L.L. LBS	THREAD LENGTHS INCH	I.D. IF EYE INCH	N.W. LBS / 100 PCS
1/4 x 1	650	1.00	0.88	3.20
5/16 x 1-1/8	1,200	1.13	1.12	6.20
3/8 x 1-1/4	1,550	1.25	1.38	12.50
1/2 x 1-1/2	2,600	1.50	1.75	25.00
5/8 x 1-3/4	5,200	1.75	2.25	50.00
3/4 x 2	7,200	2.00	2.75	87.50
7/8 x 2-1/4	10,600	2.25	3.25	150.00
1 x 2-1/2	13,300	2.50	3.75	218.00
1-1/4 x 3	21,000	3.00	4.50	380.00
1-1/2 x 3-1/2	24,000	3.50	5.50	700.00

M.B.S. is 5 times of W.L.L.

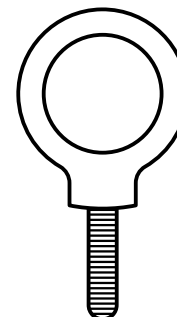
SHOULDER NUT EYE BOLT

Hot galvanized, forged steel



SHOULDER MACHINERY EYE BOLT

Hot galvanized, forged steel

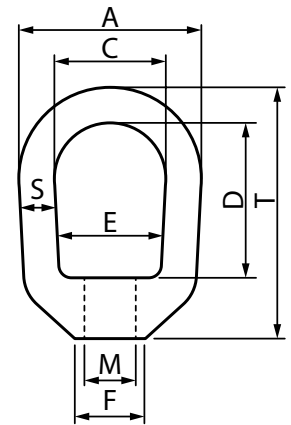


EYE BOLTS & EYE NUTS

STD. LAP SIZE INCH	EYE NUTS FORGED STEEL DIMENSIONS (INCH)						MAX LAP SIZE POSSIBLE	W.L.L. LBS	WEIGHT LBS
	A	C	E	F	S	T			
1/4"	1-1/4	3/4	21/32	1/2	1/4	1-11/16	3/8	520	0.09
5/16"	1-1/4	3/4	21/32	1/2	1/4	1-11/16	3/8	850	0.09
3/8"	1-5/8	1	3/4	9/16	5/16	2-1/16	7/16	1,250	0.18
7/16"	2	1-1/4	1	13/16	3/8	2-1/2	1/2	1,700	0.29
1/2"	2	1-1/4	1	13/16	3/8	2-1/2	-	2,250	0.29
5/8"	2-1/2	1-1/2	1-3/16	1	1/2	3-3/16	3/4	3,600	0.58
3/4"	3	1-3/4	1-3/8	1-1/8	5/8	3-7/8	7/8	5,200	1.00
7/8"	3-1/2	2	1-5/8	1-5/16	3/4	4-5/16	1	7,200	1.70
1"	4	2-1/4	1-7/8	1-9/16	7/8	5	1-1/4	10,000	2.75
1-1/8"	4	2-1/4	1-7/8	1-9/16	7/8	5	1-1/4	12,300	2.75
1-1/4"	4-1/2	2-1/2	1-15/16	1-7/8	1	5-3/4	1-1/2	15,500	3.85
1-3/8"	5	2-3/4	2	2	1-1/8	6-1/4	1-1/2	18,500	5.00
1-1/2"	5-5/8	3-1/8	2-3/8	2-1/4	1-1/4	6-3/4	1-3/4	22,500	6.70
2	7	4	4	3-3/8	1-1/2	10	2-3/4	40,000	18.70

EYE NUTS

Forged steel



Read important warnings and information on the inside back cover of this catalog titled Cautions.