

CHAIN & LINKS



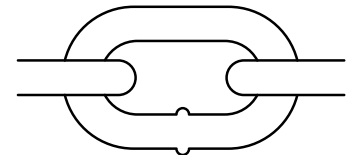


CHAIN



TRADE SIZE	PROOF COIL CHAIN / GRADE 30						INNER LINK DIMENSIONS	
	Working Load Limit in Pounds	Feet per Drum	Feet per 1/2 Drum	Minimum Weight per Foot	Maximum Length per 100 Links	Minimum Breaking Strength in Pounds	Inside Length	Inside Width
3/16"	800	1,600	800	.33	96.4"	3,200	0.98"	0.30"
1/4"	1,300	800	400	.63	124.0"	5,200	1.24"	0.38"
5/16"	1,900	550	275	.856	129.1"	7,600	1.29"	0.44"
3/8"	2,650	400	200	1.41	137.8"	10,600	1.38"	0.55"
1/2"	4,500	200	100	2.40	179.1"	18,000	1.79"	0.72"
5/8"	6,900	150	75	3.58	220.5"	27,600	2.20"	0.79"
3/4"	10,600	100	50	5.48	275.6"	42,400	2.76"	0.98"
7/8"	12,800	75	35	7.31	258.7"	51,200	3.03"	1.08"
1"	17,900	60	30	9.41	278.8"	71,600	3.58"	1.25"

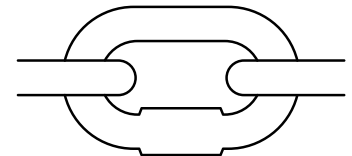
PROOF COIL CHAIN



Grade 30 / Self Colored, Zinc Plated & Hot Dip Galvanized

TRADE SIZE	HIGH TEST CHAIN / GRADE 43						INNER LINK DIMENSIONS	
	Working Load Limit in Pounds	Feet per Drum	Feet per 1/2 Drum	Minimum Weight per Foot	Maximum Length per 100 Links	Minimum Breaking Strength in Pounds	Inside Length	Inside Width
1/4"	2,600	800	400	0.63	124.0"	7,800	1.24"	0.38"
5/16"	3,900	550	275	0.93	129.1"	11,700	1.29"	0.44"
3/8"	5,400	400	200	1.41	167.8"	16,200	1.38"	0.55"
1/2"	9,200	200	100	2.40	179.1"	27,600	1.79"	0.72"
5/8"	13,000	150	75	3.58	220.5"	39,000	2.20"	0.79"
3/4"	20,200	100	50	5.48	275.6"	60,600	2.76"	0.98"

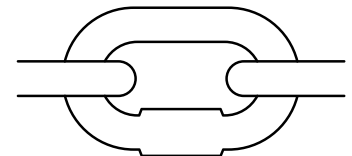
HIGH TEST CHAIN



Grade 43 / Self Colored, Zinc Plated & Hot Dip Galvanized

TRADE SIZE	TRANSPORT CHAIN / GRADE 70 YELLOW CHROMATED						INNER LINK DIMENSIONS	
	Working Load Limit in Pounds	Feet per Drum	Feet per 1/2 Drum	Minimum Weight per Foot	Maximum Length per 100 Links	Minimum Breaking Strength in Pounds	Inside Length	Inside Width
1/4"	3,150	800	400	0.63	124.0"	12,600	1.24"	0.38"
5/16"	4,700	550	275	0.93	129.1"	18,800	1.29"	0.44"
3/8"	6,600	400	200	1.41	137.8"	26,400	1.38"	0.55"
1/2"	11,300	200	100	2.40	179.0"	45,200	1.79"	0.72"

TRANSPORT CHAIN



Grade 70 / Yellow Chromated

Grade 70 Transportation Binder Chain Assemblies also available with clevis grab hooks on each end.

All chains comply with NACM standards

Read important warnings and information on the inside back cover of this catalog titled Cautions.

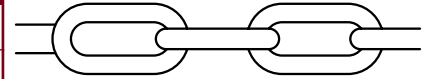


CHAIN



TRADE SIZE	LONG LINK GALVANIZED MOORING CHAIN / GRADE 43			Minimum Breaking Strength in Pounds	INNER LINK DIMENSIONS	
	Feet per Drum	Minimum Weight per Foot	Working Load Limit in Pounds		Inside Length	Inside Width
3/8"	400	1.31	5,400	16,200	1.65"	0.65"
1/2"	200	2.39	9,200	27,600	1.97"	0.87"
5/8"	150	3.38	13,000	39,000	2.53"	0.92"
3/4"	100	5.27	20,200	60,600	2.99"	1.04"
1"	100	8.31	30,865	92,595	4.13"	3.34"

LONG LINK MOORING CHAIN

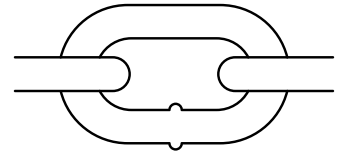


Grade 43 / Hot Dip Galvanized

ALL Mooring Chain has a 3:1 Design Factor

TRADE SIZE	STAINLESS STEEL CHAIN / T316			Minimum Breaking Strength in Pounds	INNER LINK DIMENSIONS	
	Working Load Limit in Pounds	Feet per Drum	Weight per Foot in Pounds		Inside Length	Inside Width
1/8"	375	1,000	0.25	1,500	0.88"	0.29"
3/16"	930	1,000	0.45	3,720	0.98"	0.40"
1/4"	1,570	400	0.60	6,240	1.14"	0.47"
7 MM	1,600	400	0.62	6400	1.15"	0.48"
5/16"	1,900	275	0.88	9,600	1.28"	0.54"
3/8"	3,550	200	1.40	14,200	1.38"	0.60"
1/2"	6,500	200	2.40	26,000	1.78"	0.75"
5/8"	9,800	150	3.58	39,200	2.15"	0.79"

STAINLESS STEEL CHAIN



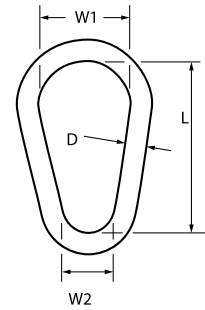
AISI Type 316 / PC Strength

All of our material is backed by a 100% "flaw free" guarantee.

SLING LINKS

SIZE	PEAR SHAPED SLING LINKS, HIGH TEST				
D	Working Load Limit in Lbs. (Single Pull)	Approx. Weight Each in Pounds	Inside Length	Inside Width	
			L	W1	W2
1/2"	3,600	0.51	3.0"	1.00"	2.00"
5/8"	6,250	1.10	3.75"	1.25"	2.50"
3/4"	9,000	1.50	4.5"	1.50"	2.75"
7/8"	11,400	2.70	5.25"	1.75"	3.00"
1"	16,000	3.25	6.0"	2.00"	3.50"
1-1/4"	25,650	4.0	7.75"	2.50"	4.375"

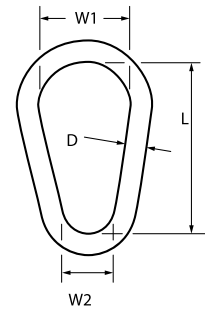
PEAR SLING CARBON LINKS HIGH TEST / GRADE 43



Heat Treated, Self-Colored & Painted

SIZE	PEAR SHAPED SLING LINKS, ALLOY				
D	Working Load Limit in Lbs. (Single Pull)	Approx. Weight Each in Pounds	Inside Length	Inside Width	
			L	W1	W2
1/2"	3,600	0.51	3.0"	1.00"	2.00"
5/8"	6,250	1.10	3.75"	1.25"	2.50"
3/4"	9,000	1.50	4.5"	1.50"	2.75"
7/8"	11,400	2.70	5.25"	1.75"	3.00"
1"	16,000	3.25	6.0"	2.00"	3.50"
1-1/4"	25,650	4.0	7.75"	2.50"	4.375"

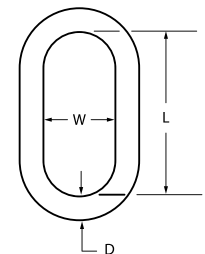
PEAR SLING ALLOY LINKS GRADE 80



Heat Treated, Self-Colored & Painted

SIZE	OBLONG MASTER LINKS, GRADE 80 ALLOY			
D	Working Load Limit in Lbs. (Single Pull)	Approx. Weight Each in Pounds	Inside Length	Inside Width
			L	W
1/2"	4,100	0.84	5.00"	2.25"
5/8"	5,500	1.6	6.00"	3.00"
3/4"	8,600	2.2	6.00"	3.00"
1"	20,300	5.0	8.00"	4.00"
1.1/4"	29,300	10.5	9.00"	5.00"
1.1/2"	39,900	16.5	11.00"	6.00"
1.3/4"	52,100	28.2	12.00"	6.75"

OBLONG MASTER LINKS ALLOY GRADE 80



Heat Treated, Self-Colored & Painted

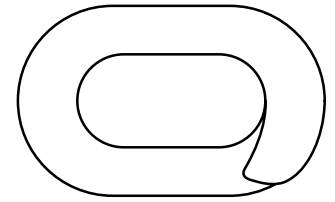


LINKS



SIZE INCH	LAP LINKS, ZINC PLATED	
	OL MM	NW KG/100 PCS
1/8 X 3/4"	19 MM	0.60
3/16 X 1"	25 MM	1.40
7/32 X 1-1/4"	32 MM	2.30
1/4 X 1-1/4"	32 MM	3.00
1/4 X 1-1/2"	38 MM	3.60
5/16 X 1-1/2"	38 MM	6.00
3/8 X 1-5/8"	42 MM	10.00
3/8 X 2"	50 MM	11.00
1/2 X 2-1/2"	64 MM	25.00

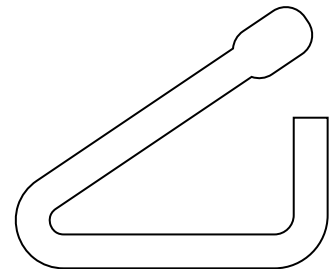
LAP LINKS



Zinc Plated

SIZE DIAMETER	COLD SHUTS, ZINC PLATED		
	A	L	F
3/16 MM	5.0 MM	25 MM	10 MM
1/4 MM	6.0 MM	30 MM	12 MM
5/16 MM	8.0 MM	35 MM	12 MM
3/8 MM	9.5 MM	38 MM	14 MM
1/2 MM	12.0 MM	48 MM	27 MM

COLD SHUT



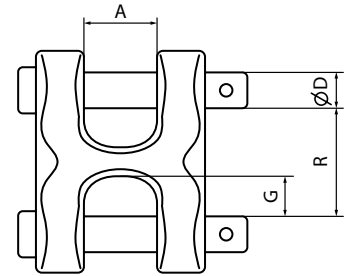
Zinc Plated

LINKS



SIZE	WLL POUNDS	TWIN CLEVIS LINKS				WEIGHT POUNDS
		A	D	G	R	
1/4 - 5/16"	4,700	0.47	0.38	0.43	1.18	0.32
3/8"	6,600	0.53	0.47	0.48	1.34	0.44
7/16-1/2"	11,250	0.65	0.56	0.63	1.75	1.00
5/8"	16,500	0.78	0.69	0.75	2.12	1.32

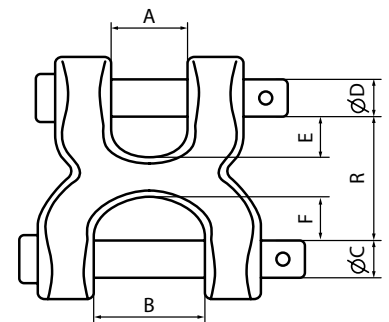
TWIN CLEVIS LINKS



Hot Dip Galvanized
Drop Forged

SIZE	WLL POUNDS	DOUBLE CLEVIS LINKS							WEIGHT POUNDS
		A	B	C	D	E	F	R	
1/4"	2,600	0.50	0.75	0.50	0.31	0.38	0.75	1.50	0.44
5/16-3/8"	5,400	0.56	1.00	0.63	0.44	0.47	1.00	1.81	0.81
7/16"	7,000	0.69	1.13	0.69	0.56	0.59	1.09	2.19	1.28
1/2"	9,200	0.81	1.25	0.75	0.63	0.66	1.25	2.47	1.68
5/8"	17,500	0.78	1.63	1.00	0.75	0.83	1.51	3.03	2.91

DOUBLE CLEVIS LINKS



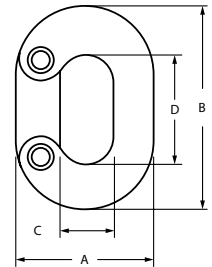
Hot Dip Galvanized
Drop Forged

LINKS



SIZE	WORKING LOAD LIMIT IN POUNDS	APPROXIMATE WEIGHT EACH IN POUNDS	CONNECTING LINKS			
			A	B	C	D
3/16"	750	.03	.81	1.19	.31	.69
1/4"	1,250	.06	1.00	1.50	.44	.84
5/16"	1,900	.10	1.19	1.69	.47	.94
3/8"	2,650	.17	1.44	2.09	.56	1.19
1/2"	4,500	.36	1.75	2.63	.66	1.44

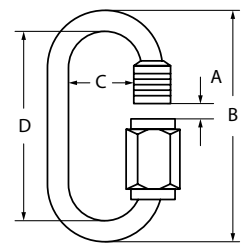
CONNECTING LINKS/MISSING LINKS



Forged Steel, Heat Treated,
Electro Galvanized

SIZE	WORKING LOAD LIMIT IN POUNDS	APPROXIMATE WEIGHT EACH IN POUNDS	QUICK LINKS / RAPID LINKS			
			A	B	C	D
1/8"	400	.02	.19	1.45	.39	1.19
3/16"	660	.05	.25	2.06	.50	1.69
1/4"	880	.08	.31	2.38	.56	1.88
5/16"	1,760	.18	.38	2.94	.69	2.31
3/8"	2,200	.23	.44	3.19	.69	2.44
1/2"	3,300	.52	.56	4.25	.94	3.25

QUICK LINKS/ RAPID LINKS



Electro Galvanized